

Architect:

Thomas McInerney
ARCHITECT
 1288 Marcy Street
 Iowa City, Iowa 52240-3331
 www.thomasarchitect.com
 319-331-0365
 thomas@thomasarchitect.com

ITEMS SHOWN ARE DIAGRAMMATIC AND ARE SHOWN FOR THE LIMITED PURPOSE OF INDICATING PROPOSED LOCATIONS OF THE DESIGN. CONTRACTORS SHALL PROVIDE WORK IN ACCORDANCE WITH ALL APPLICABLE CODES AND REGULATIONS REQUIRED BY THE AUTHORITY HAVING JURISDICTION. CONTRACTOR SHALL COORDINATE THE INSTALLATION OF NEW SYSTEMS WITH EXISTING SYSTEMS.

Thomas Mc Inerney Architect reserves the right to determine a fair and equitable solution to any problems, mistakes, oversights or hidden damage. Please do not hesitate to phone our office at 319-331-0365, especially immediately upon discovery a conflict with the Scope of Work.

Please do not instinctively produce a solution or proceed with work that would result in a change order requiring reimbursement by the owner.

Any solutions outside this policy shall be with prior approval and will be at the franchisee's or contractor's expense.

Project:

Blue Bird Cafe
 West Cherry Street & HWY 965
 North Liberty, Iowa

Project number: 11.27

Note: © COPYRIGHT UNAUTHORIZED COPYING, DISCLOSURE OR CONSTRUCTION WITHOUT WRITTEN PERMISSION BY THOMAS MCINERNEY, ARCHITECT, IS PROHIBITED.

Issue date:

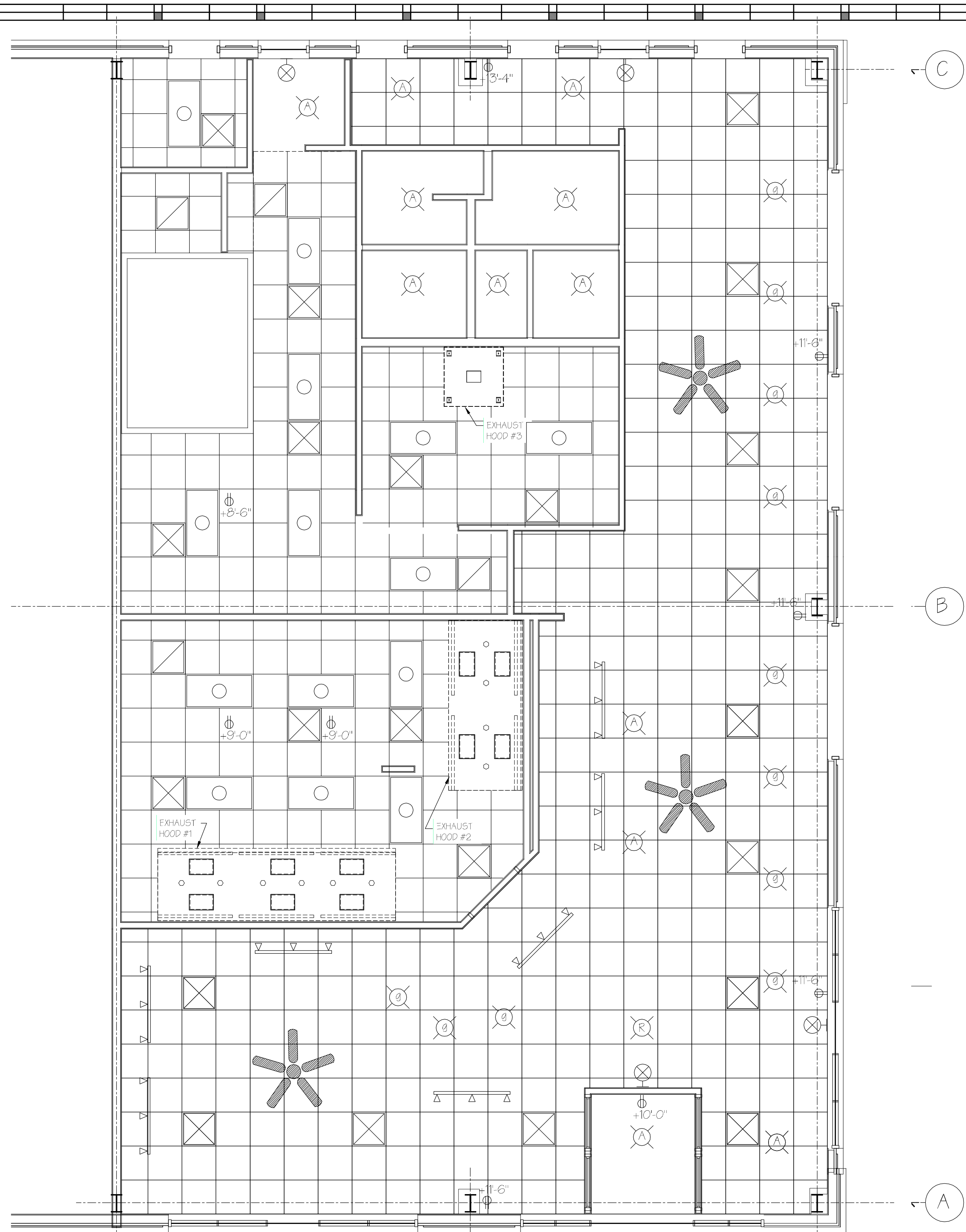
| Date | Description |
|------------|---------------|
| 2011.10.31 | PERMIT REVIEW |
| 2011.11.11 | Owner Review |
| 2011.12.01 | REVISIONS |

Sheet Title:

REFLECTED CEILING PLAN

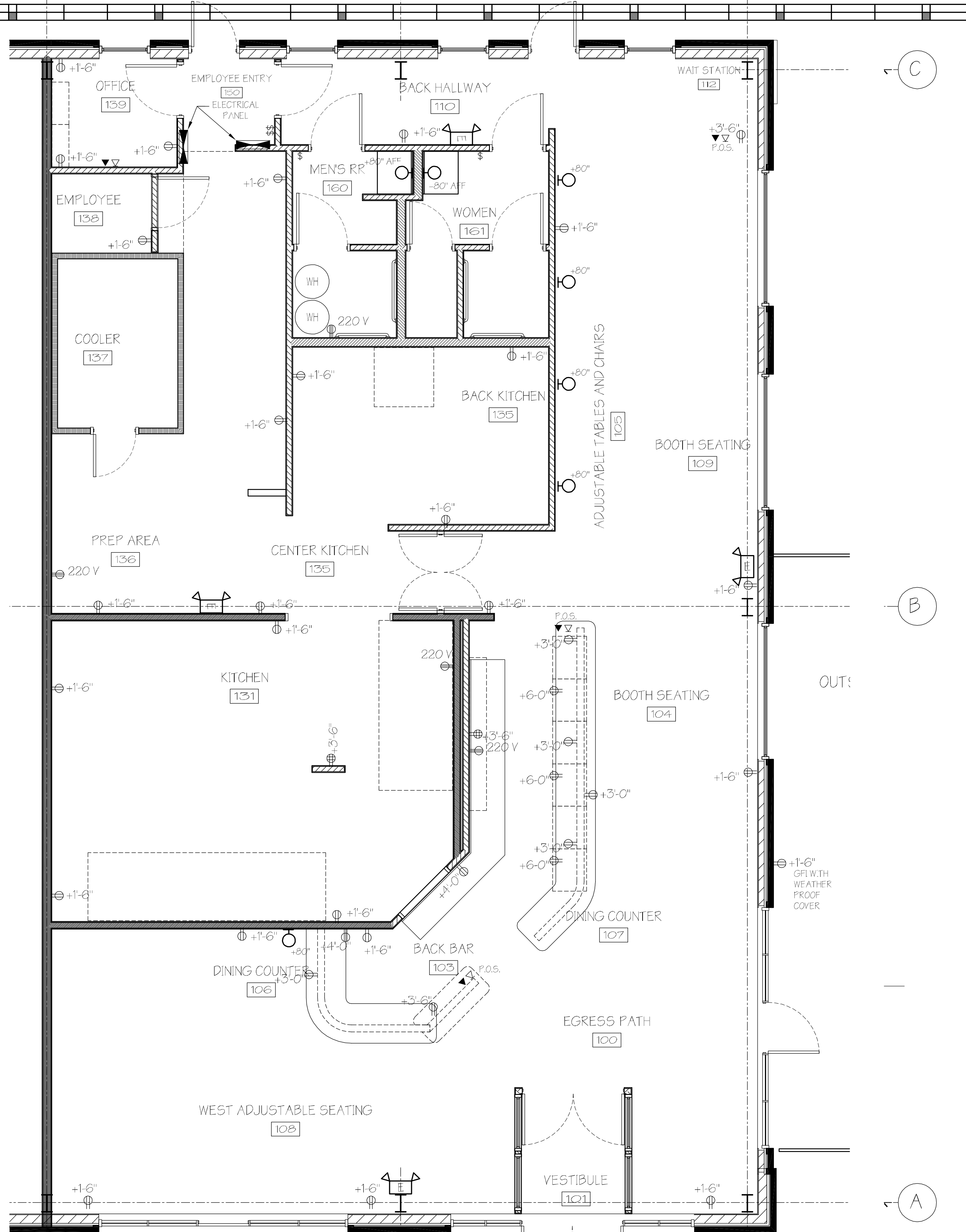
Sheet Number:

A-110



A1 PLAN
 SCALE: 1/4" = 1'-0"

| Number | Description | QTY | Manufacturer | Model | NOTE |
|--------|-----------------------------|-----|-------------------|--------------------------|-------------------------------------|
| 000 | INDOOR EMERGENCY LIGHT | 4 | COOPER LIGHTING | AP25Q | WALL MOUNTED |
| 000 | WALL SCONCE | 5 | Philips Forecast | F540636 | DINING AREA |
| 705 | TRACK LIGHTING | 4 | CON-TECH LIGHTING | LTK3330 P FA30-P LF30-LS | 4' TRACK KIT WITH FLOATING FEED KIT |
| 707 | TRACK LIGHTING | 3 | CON-TECH LIGHTING | CTL216 W/ LA2050N | 4' TRACK KIT WITH FLOATING FEED KIT |
| 709 | PENDANT | 11 | Philips Forecast | F5184 | 6"-8" AFF |
| 710 | PENDANT | 1 | Philips Forecast | F192270 | 8"-0" AFF |
| 723 | EXIT SIGN (MODEL# NXPC3RWH) | 4 | NAVILITE | AP70R | WALL MOUNTED ABOVE EXIT |
| 724 | RECESSED CAN LIGHT FIXTURE | 13 | JUNO | IC22LEDG2-27K / 24W-WH | LED |
| 801 | RESTROOM SCONCE | 2 | Philips Forecast | F540636 | Wall Mounted above Lavatory |
| 802 | DUPLEX ELECTRICAL OUTLET | 9 | --- | --- | --- |
| 901 | RETURN AIR GRILLE | 20 | --- | --- | --- |
| 902 | SUPPLY AIR DIFFUSER | 11 | --- | --- | --- |
| 910 | CEILING FAN WITH LIGHT | 3 | HUNTER | 60" TRIBECA | 26169 Light kit & 27207 Control |



A1 PLAN
 SCALE: 1/4" = 1'-0"

| Description | Manufacturer | Model | NOTE | QTY |
|-------------------------|------------------|---------|--------------|-----|
| 220 V ELECTRICAL OUTLET | --- | --- | 1,2 | 4 |
| ELECTRICAL OUTLET | --- | --- | 1,2 | 36 |
| INDOOR EMERGENCY LIGHT | COOPER LIGHTING | AP25Q | WALL MOUNTED | 4 |
| WALL SCONCE | Philips Forecast | F540636 | DINING AREA | 5 |

ELECTRICAL NOTES:
 1. DUPLEX - 120V-15-20 AMP - 18" AFF UNLESS OTHERWISE NOTED. QUAD OUTLET - 120V-20 AMP - 18" AFF UNLESS OTHERWISE NOTED.
 2. ELECTRICAL OUTLETS INDICATED ARE FOR CONVENIENCE USE ONLY. COORDINATE KITCHEN EQUIPMENT POWER REQUIREMENTS AND LOCATE REQUIRED POWER WHERE EQUIPMENT IS INDICATED ON SHEET K-101.