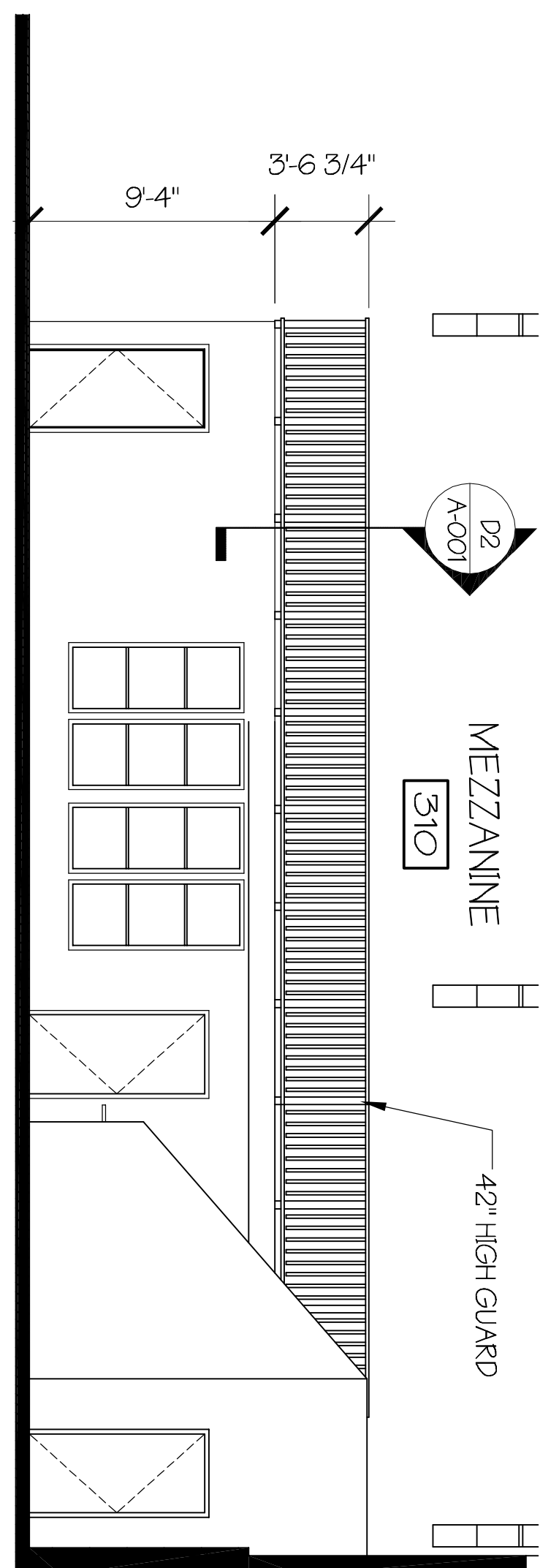
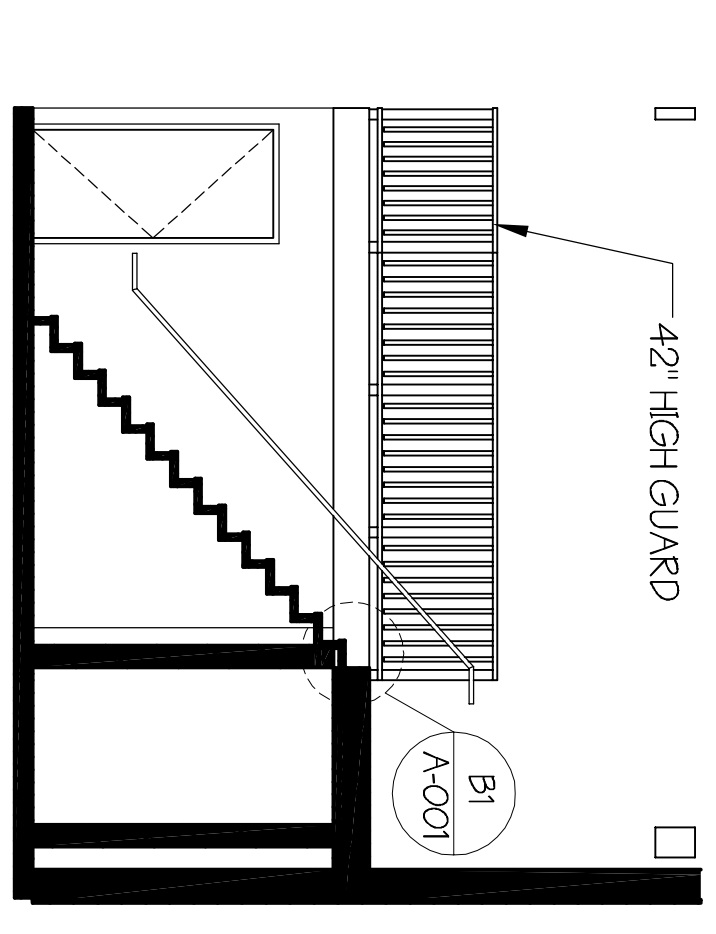


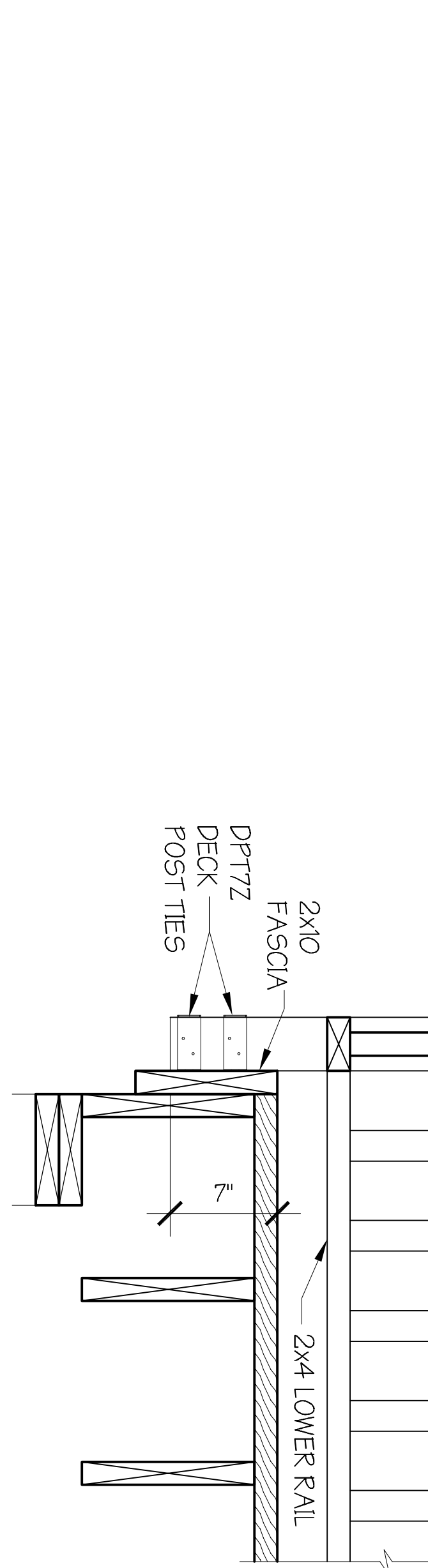
B4 SIGNAGE ELEVATION
1/8" = 1'-0"



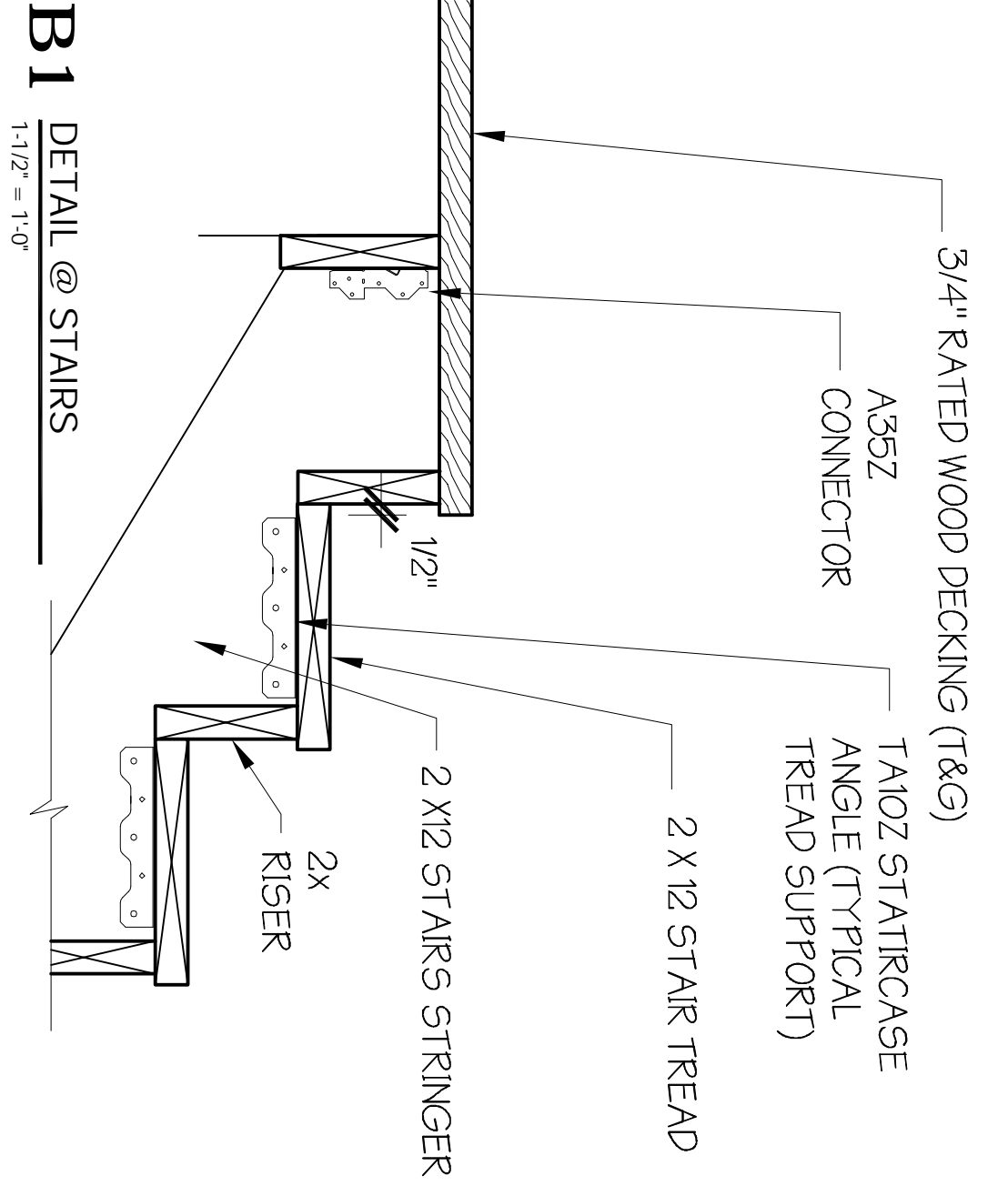
B3 INTERIOR ELEVATION
3/16" = 1'-0"



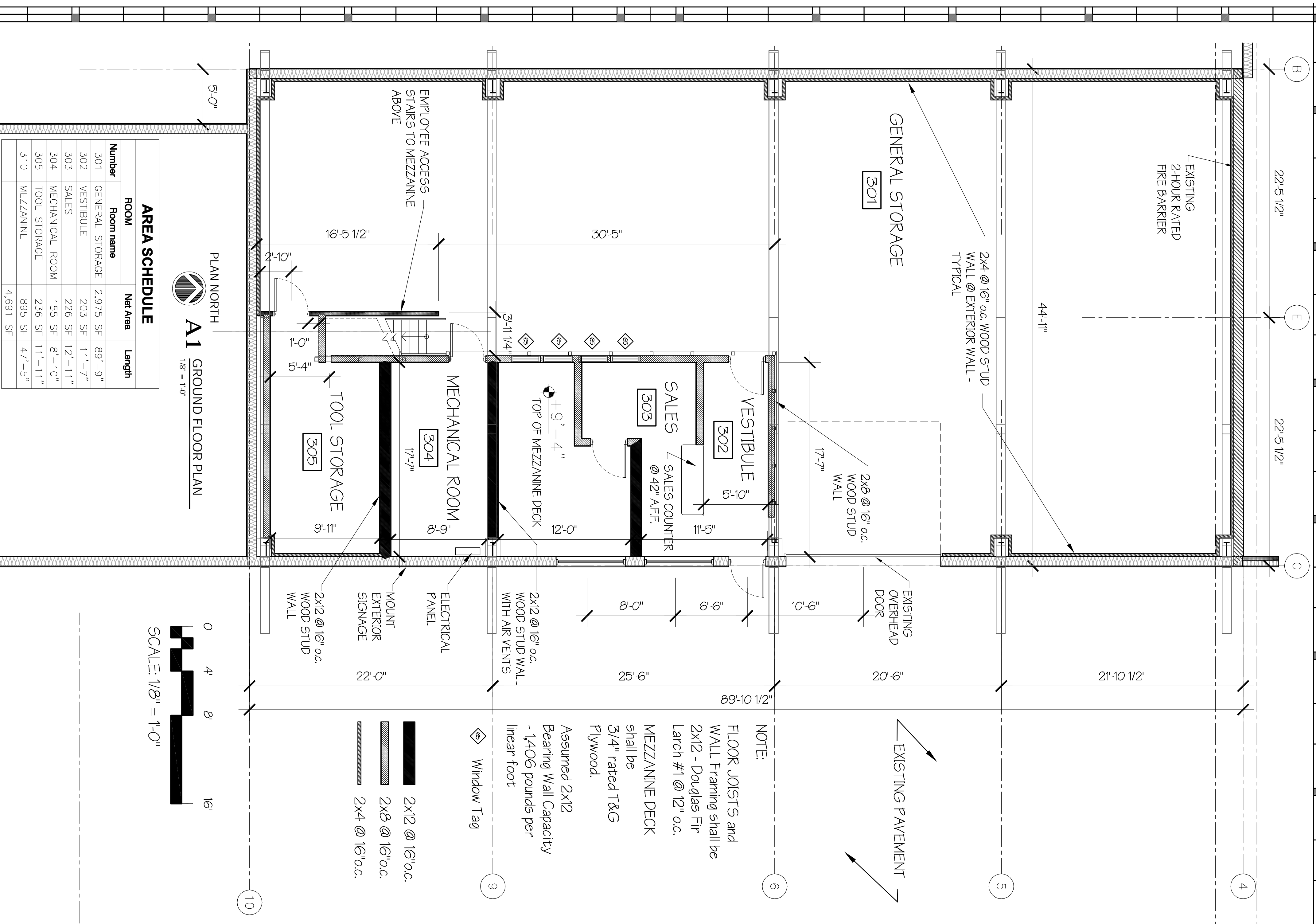
B2 INTERIOR ELEVATION
3/16" = 1'-0"



D2 DETAIL
1-1/2" = 1'-0"



B1 DETAIL @ STAIRS
1-1/2" = 1'-0"



A1 GROUND FLOOR PLAN
1/8" = 1'-0"

SCALE: 1/8" = 1'-0"

AREA SCHEDULE

Number	Room name	Net Area	Length
301	GENERAL STORAGE	2,975 SF	89'-9"
302	VESTIBULE	203 SF	11'-7"
303	SALES	226 SF	12'-11"
304	MECHANICAL ROOM	155 SF	8'-10"
305	TOOL STORAGE	236 SF	11'-11"
310	MEZZANINE	895 SF	47'-5"
		4,691 SF	

Architect:

Thomas McInerney
 Architect
 1208 Marcy Street
 IOWA CITY, IOWA
 Email: thomas@thomasarchitect.com
 Phone: 319-331-0365

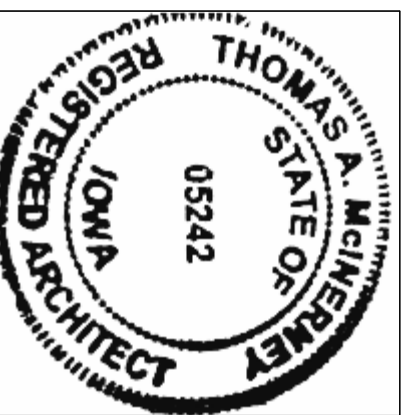
Project:
The Salvage Barn
 Eastside Recycling Center
 IOWA CITY, IOWA

Project number: 10.32
 Note: © COPYRIGHT UNAUTHORIZED COPYING, DISCLOSURE OR CONSTRUCTION WITHOUT WRITTEN PERMISSION BY THOMAS MCINERNEY, ARCHITECT, IS PROHIBITED.

Issue date:

Date	Description
2011.08.10	REVIEW

Sheet Title:
SECTIONS AND details
 Sheet Number:
a-501



I hereby certify that the portion of this technical submission distributed herein was prepared by me or under my direct supervision and responsible charge. I am a duly registered Architect under the laws of the State of Iowa.
 THOMAS A. MCINERNEY
 8/11/2011
 Registration expires: June 30, 2013 Date issued: JANUARY 2001
 Page or sheet number: A-501